

YWCA Elm Centre opens

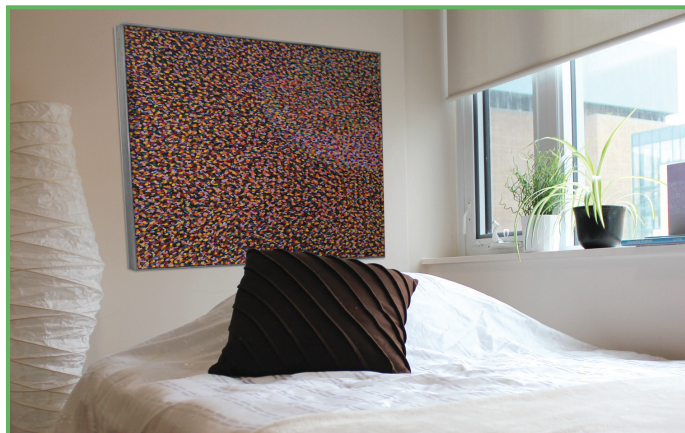
300 NEW HOMES FOR WOMEN & their families

YWCA TORONTO

YWCA Toronto transforms the lives of women and girls. We help women and girls achieve equality, economic independence and lives free from violence.

We offer a range of housing options, employment and training programs, community support programs, girls' programs and family programs; we also engage in systemic advocacy.

YWCA Toronto is Canada's largest provider of affordable and supportive housing options for women.



YWCA ELM CENTRE: AFFORDABLE, SUPPORTIVE HOUSING

The YWCA Elm Centre has 300 affordable apartments for single low-income women, women with children, women living with mental health and addiction issues and families of Aboriginal ancestry.

300 apartments

§ 150 units are rent-gear-to-income (RGI).

§ 100 of the 150 RGI apartments are for women with mental health and/or addictions issues. These tenants receive individualized support to help them identify and achieve goals — and live full lives.

§ 150 units are affordable apartments (low end of market).

§ 50 of the 150 RGI units are for families of Aboriginal ancestry.

§ 15% of the 300 units are for women over the age of 50.

§ The YWCA Elm Centre was developed in partnership with Wigwamen Incorporated, St. Michael's Hospital and the Jean Tweed Centre.

YWCA ELM CENTRE: A COMMUNITY HUB

§ 180-seat auditorium (Nancy's), reception hall (The Rotary Club of Toronto Reception Hall) and courtyard (Hon. Margaret & Mr. G. Wallace F. McCain Courtyard)

§ community meeting rooms

§ restaurant (opening in late 2012)